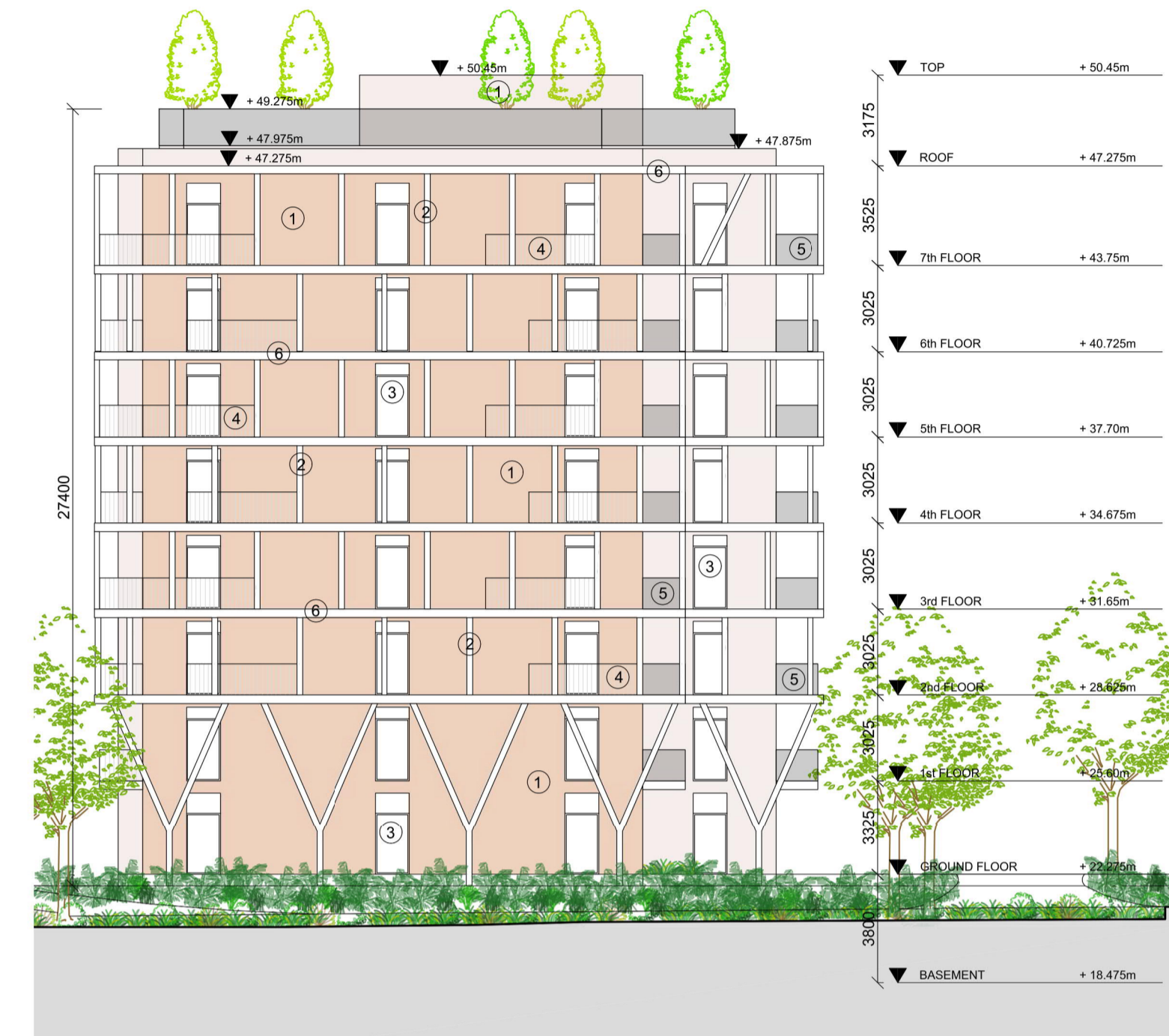
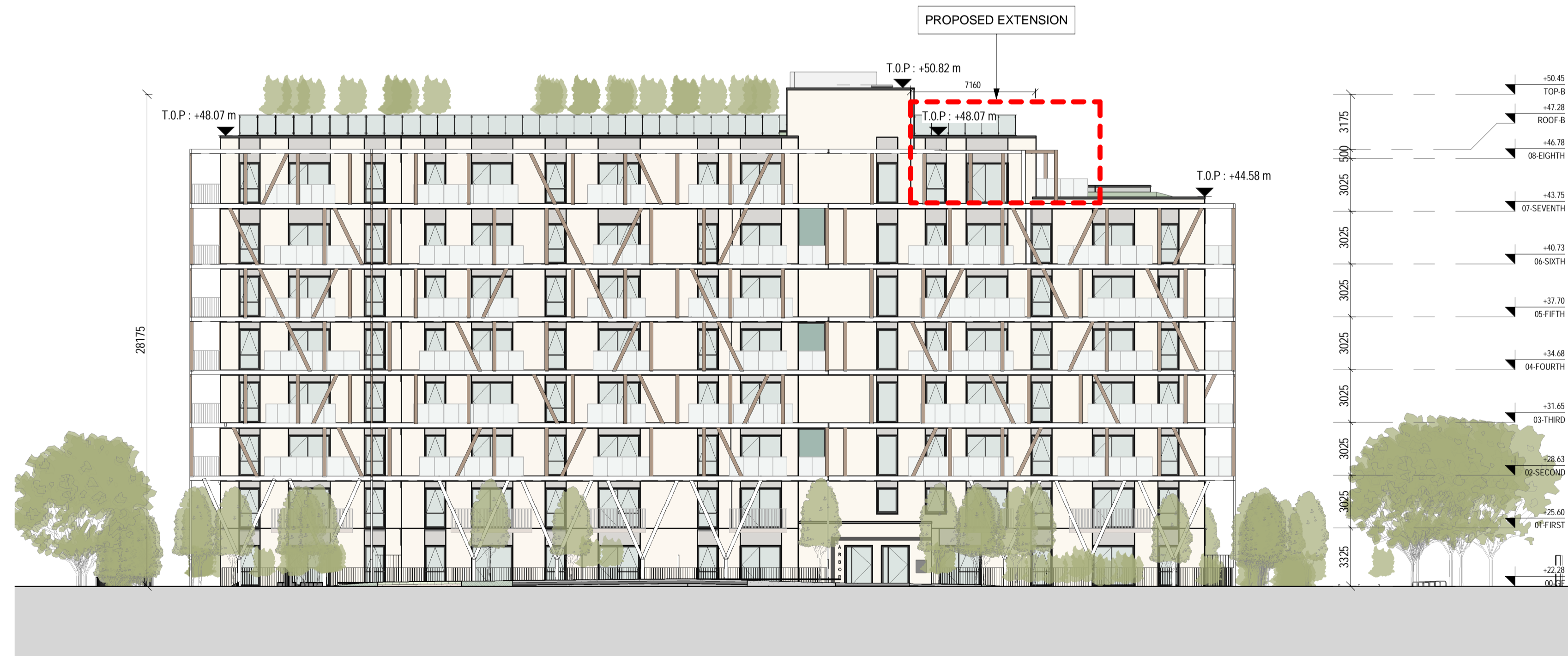




3 BLOCK B - EXISTING PLANNING WEST ELEVATION 1:200
Scale: 1:200



4 BLOCK B - EXISTING PLANNING NORTH ELEVATION 1:200
Scale: 1:200

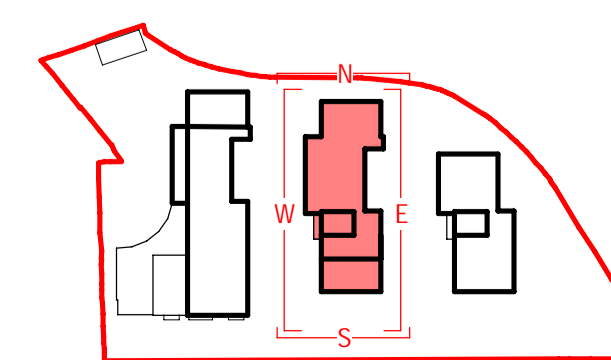


1 BLOCK B - PROPOSED PLANNING WEST ELEVATION 1:200
Scale: 1:200



2 BLOCK B - PROPOSED PLANNING NORTH ELEVATION 1:200
Scale: 1:200

REV	DATE	DESCRIPTION	BY
P1	16/01/2024	PLANNING	GC
P2	01/02/2024	PLANNING	GC
P3	09/02/2024	PLANNING	GC
P4	14/03/2024	PLANNING	AR
P5	08/05/2024	PLANNING	AR



APPROVED BY

Client: 1 PLAYERS LAND LIMITED
 Project: CROSS AVENUE, BLACKROCK
 Title: BLOCK B - PLANNING NORTH & WEST ELEVATIONS
 Stage: **PLANNING**
 Status: S2 - FOR INFORMATION
 Sheet No.: 1320-MDO-BB-ZZ-DR-A-08004
 Scale as: 1:200 @ A1 Current Rev.: P5 Project No.: 1320



11 Merrion Square, Dublin 2, Ireland
 Telephone: +353 (0)1 400 4171
 info@mdo.ie | www.mdo.ie